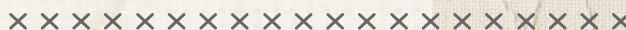
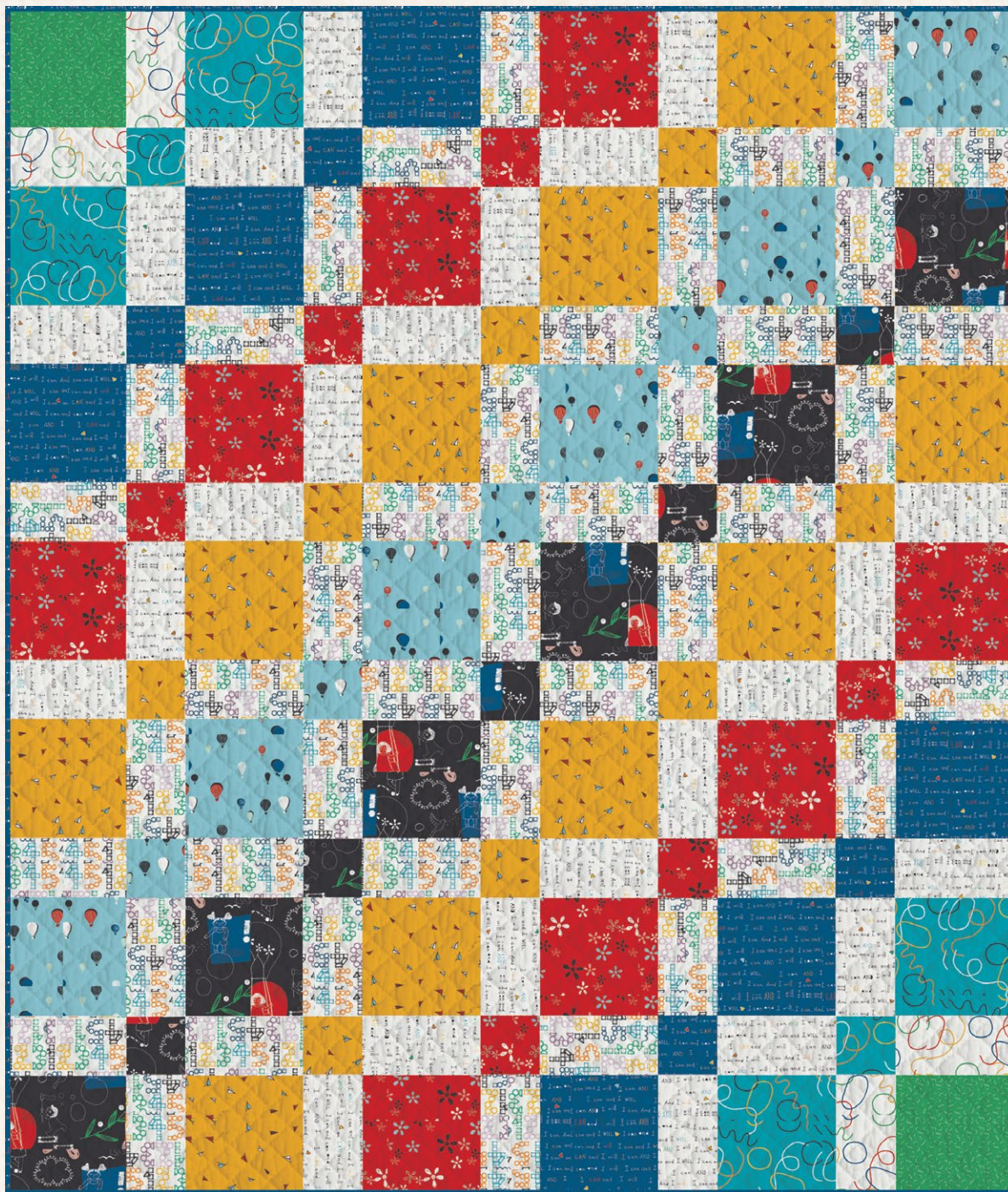


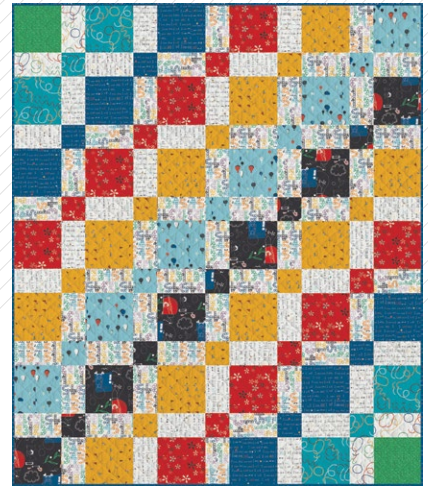


UP & AWAY



UP & AWAY

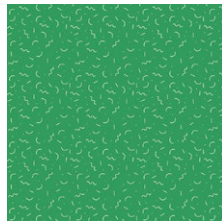
QUILT DESIGNED BY AGFstudio



SISU! FABRICS DESIGNED BY AGF Studio



SSU-10050
SCHOOL OF SISU ESSENCE



SSU-10051
THINGAMAJIGS GIGGLING



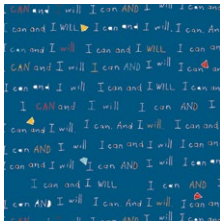
SSU-10053
WILLFUL BUDS CARDINAL



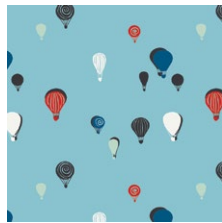
SSU-10055
PAPER PLANE HOPES



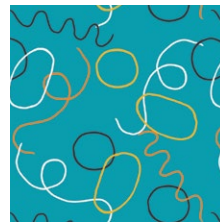
SSU-10056
WHATCHAMACALLITS
OVERFLYING



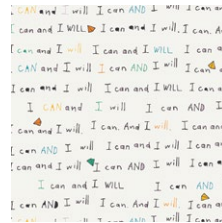
SSU-10057
THE MOTTO HIGHLIGHTED



SSU-10058
SPACE BUBBLES FIZZ



SSU-20056
WHATCHAMACALLITS
UNDERWATER



SSU-20057
THE MOTTO DEFINED



SSU-20059
COUNTDOWN AND POW!



UP & AWAY

FINISHED SIZE | 68" x 80"

FABRIC REQUIREMENTS

Fabric A	SSU-10051	¼ yd.
Fabric B	SSU-20056	¾ yd.
Fabric C	SSU-10057	⅞ yd.
Fabric D	SSU-10053	⅝ yd.
Fabric E	SSU-10055	⅞ yd.
Fabric F	SSU-10058	½ yd.
Fabric G	SSU-10050	½ yd.
Fabric H	SSU-10056	¼ yd.
Fabric I	SSU-20057	⅞ yd.
Fabric J	SSU-20059	1½ yd.

BACKING FABRIC
SSU-20059 5 yds (Suggested)

BINDING FABRIC
Fabric **C** SSU-10057 (Included)

CUTTING DIRECTIONS

¼" seam allowances are included.
WOF means width of fabric.

- Two (2) 8½" squares from fabric **A**.
- Four (4) 8½" squares from fabric **B**.
- Two (2) 4½" squares from fabric **B**.

- Four (4) 4½" squares from fabric **C**.
- Six (6) 8½" squares from fabrics **C, F, G**.
- Eight (8) 8½" squares from fabric **D**.
- Six (6) 4½" squares from fabric **D**.
- Ten (10) 8½" squares from fabric **E**.
- Eight (8) 4½" squares from fabric **E**.
- Five (5) 4½" squares from fabrics **F, G**.
- Four (4) 8½" x 4½" rectangles from fabric **H**.
- Twenty Four (24) 8½" x 4½" rectangles from fabric **I**.
- Forty three (43) 8½" x 4½" rectangles from fabric **J**.

CONSTRUCTION

Sew all rights sides together with ¼" seam allowance.

- There are thirteen different rows in this quilt.
- Start constructing the rows following the diagrams below.

Row #1

- Take one 8½" square from fabrics **A, B, C, D, E** & **F**, one 8½" x 4½" rectangle from fabric **H** and two 8½" x 4½" rectangles from fabrics **I** & **J**.
- Attach them in the order **A-H-B-I-C-J-D-I-E-J-F**.
- Press and set aside.



DIAGRAM 1

Row #2

- Take one 4½" square from fabrics **B, C, D, E** & **F**, one 8½" x 4½" rectangle from fabric **H**, two 8½" x 4½" rectangles from fabric **I** and three 8½" x 4½" rectangles from fabric **J**.
- Attach them in the order **H-B-I-C-J-D-I-E-J-F-J**.
- Press and set aside.



DIAGRAM 2

Row #3

- Take one 8½" square from fabrics **B, C, D, F & G**, two 8½" x 4½" rectangles from fabric **I** and three 8½" x 4½" rectangles from fabric **J**.
- Attach them in the order **B-I-C-J-D-I-E-J-F-J-G**.
- Press and set aside.



DIAGRAM 3

Row #4

- Take one 4½" square from fabrics **C, D, E, F & G**, two 8½" x 4½" rectangles from fabric **I** and four 8½" x 4½" rectangles from fabric **J**.
- Attach them in the order **I-C-J-D-I-E-J-F-J-G-J**.
- Press and set aside.



DIAGRAM 4

Row #5

- Take one 8½" square from fabrics **C, D, F & G**, two 8½" squares from fabric **E**, one 8½" x 4½" rectangle from fabric **I** and four 8½" x 4½" rectangles from fabric **J**.
- Attach them in the order **C-J-D-I-E-J-F-J-G-J-E**.
- Press and set aside.



DIAGRAM 5

Row #6

- Take one 4½" square from fabrics **D, F & G**, two 4½" square from fabric **E**, two 8½" x 4½" rectangles from fabric **I** and four 8½" x 4½" rectangles from fabric **J**.
- Attach them in the order **J-D-I-E-J-F-J-G-J-E-I**.
- Press and set aside.

J D I E J F J G J E I



DIAGRAM 6

Row #7

- Take one 8½" square from fabrics **F & G**, two 8½" squares from fabrics **D & E**, two 8½" x 4½" rectangles from fabric **I** and three 8½" x 4½" rectangles from fabric **J**.
- Attach them in the order **D-I-E-J-F-J-G-J-E-I-D**.
- Press and set aside.



DIAGRAM 7

Row #8

- Take one 4½" square from fabrics **D, F & G**, two 4½" squares from fabric **E**, two 8½" x 4½" rectangles from fabric **I** and four 8½" x 4½" rectangles from fabric **J**.
- Attach them in the order **I-E-J-F-J-G-J-E-I-D-J**.
- Press and set aside.



DIAGRAM 8

Row #9

- Take one 8½" square from fabrics **C, D, F & G**, two 8½" squares from fabric **E**, one 8½" x 4½" rectangle from fabric **I** and four 8½" x 4½" rectangles from fabric **J**.
- Attach them in the order **E-J-F-J-G-J-E-I-D-J-C**.
- Press and set aside.



DIAGRAM 9

Row #10

- Take one 4½" square from fabrics **C, D, F & G**, two 8½" x 4½" rectangles from fabric **I** and four 8½" x 4½" rectangles from fabric **J**.
- Attach them in the order **J-F-J-G-J-E-I-D-J-C-I**.
- Press and set aside.



DIAGRAM 10

Row #11

- Take one 8½" square from fabrics **B, C, D, F & G**, two 8½" x 4½" rectangles from fabric **I** and three 8½" x 4½" rectangles from fabric **J**.
- Attach them in the order **F-J-G-J-E-I-D-J-C-I-B**.
- Press and set aside.



DIAGRAM 11

Row #12

- Take one 4½" square from fabrics **B, C, D, E & G**, one 8½" x 4½" rectangle from fabric **H**, two 8½" x 4½" rectangles from fabric **I** and three 8½" x 4½" rectangles from fabric **J**.
- Attach them in the order **J-G-J-E-I-D-J-C-I-B-H**.
- Press and set aside.



DIAGRAM 12

Row #13

- Take one 8½" square from fabrics **A, B, C, D, E & G**, one 8½" x 4½" rectangle from fabric **H** and two 8½" x 4½" rectangles from fabrics **I & J**.
- Attach them in the order **G-J-E-I-D-J-C-I-B-H-A**.
- Press and set aside.

G J E I D J C I B H A



DIAGRAM 13

ASSEMBLING THE TOP

Sew all rights sides together with ¼" seam allowance. Press open.

- Attach the rows from Row #1- Row #13 together.
- Refer to cover picture.

Row #1



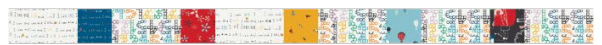
Row #2



Row #3



Row #4



Row #5



Row #6



Row #7



Row #8



Row #9



Row #10



Row #11



Row #12



Row #13

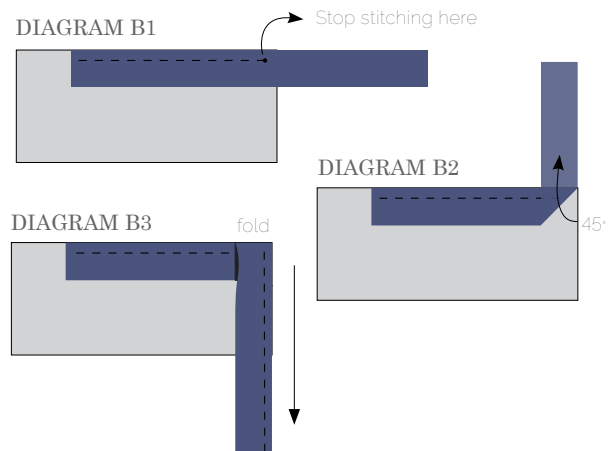


QUILT ASSEMBLY

Sew rights sides together.

- Place BACKING FABRIC on a large surface wrong side up. Stretch it with masking tape against that surface.
- Place BATTING on top of backing fabric.
- Place TOP on top of the batting with right side facing up. Smooth away wrinkles using your hands.
- Pin all layers together and baste with basting thread, using long stitches. You can also use safety pins to join the layers.
- Machine or hand quilt starting at the center and working towards the corners. Remember that quilting motifs are a matter of personal preference. Have fun choosing yours!
- After you finished, trim excess of any fabric or batting, squaring the quilt to proceed to bind it.

- Stop stitching before you reach the last 5 or 6 inches. Cut the threads and remove the quilt from under the machine presser foot. Lay the loose ends of the binding flat along the quilt edge, folding the ends back on themselves where they meet. Press them together to form a crease. Using this crease as the stitching line, sew the two open ends of the binding with right sides together (you can help yourself marking with a pencil if the crease is difficult to see).
- Trim seam to $\frac{1}{4}$ " and press open. Complete the sewing. Turn binding to back of the quilt, turn raw edge inside and stitch by hand using blind stitch.



BINDING

Sew rights sides together.

- Cut enough strips $1\frac{1}{2}$ " wide by the width of the fabric C to make a final strip 306" long. Start sewing the binding strip in the middle of one of the sides of the quilt, placing the strip right side down and leaving an approximated 5" tail. Sew with $\frac{1}{4}$ " seam allowance (using straight stitch), aligning the strip's raw edge with the quilt top's raw edge.
- Stop stitching $\frac{1}{4}$ " before the edge of the quilt (DIAGRAM B 1). Clip the threads. Remove the quilt from under the machine presser foot. Fold the strip in a motion of 45° and upward, pressing with your fingers (DIAGRAM B2). Hold this fold with your finger, bring the strip down in line with the next edge, making a horizontal fold that aligns with the top edge of the quilt (DIAGRAM B3). Start sewing at $\frac{1}{4}$ " of the border, stitching all the layers. Do the same in the four corners of the quilt.

*Congratulations
& enjoy*

XX



artgalleryfabrics.com

NOTE: While all possible care has been taken to ensure the accuracy of this pattern, We are not responsible for printing errors or the way in which individual work varies.

Please read instructions carefully before starting the construction of this quilt. If desired, wash and iron your fabrics before starting to cut.