

featuring SOULFUL COLLECTION BY MAUREEN CRACKNELL

X
X
X
X
X
X
X
X
X
X
X
X
X
X
X
X
X

MANDALA DREAMS



FREE PATTERN

XXXXXXXXXXXXXXXXXXXXXXXXXXXX



MANDALADREAMS

Maureen
Cracknell

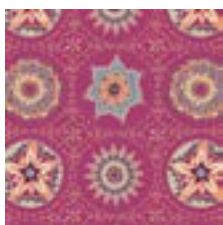
QUILT DESIGNED BY MAUREEN CRACKNELL

Soulful

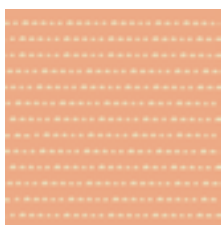


FABRICS DESIGNED BY MAUREEN CRACKNELL

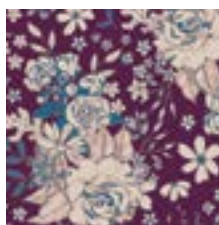
WILD HEART



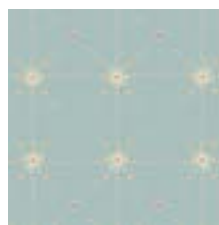
SOU-2630
MANDALA HARMONY VIVID



SOU-2631
STAY HUMBLE APRICOT



SOU-2632
FLORAL UNIVERSE PLUM



SOU-2633
FROM WITHIN CELESTE



SOU-2634
CLARITY MOMENTS STELLAR



SOU-2635
GRATEFUL JOY ORCHID



SOU-2636
CRYSTAL AWAKENING



SOU-2638
HERE & NOW PURPURITE

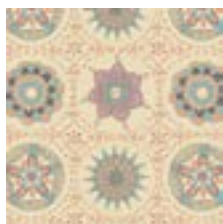


SOU-2639
DEEPEST PURPOSE INTENSE

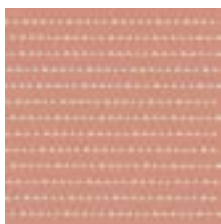


SOU-2640
BECOME ONE GREIGE

GENTLE HEART



SOU-3630
MANDALA HARMONY SILENT



SOU-3631
STAY HUMBLE SUNSET



SOU-36302
FLORAL UNIVERSE AUBURN



SOU-3633
FROM WITHIN ALMOND



SOU-3634
CLARITY MOMENTS SOLAR



SOU-3635
GRATEFUL JOY CIELO



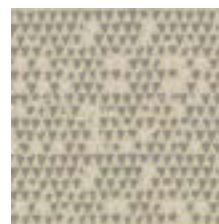
SOU-3637
LIGHT HEARTED



SOU-3638
HERE & NOW CALCITE



SOU-3639
DEEPEST PURPOSE SOFT



SOU-3640
BECOME ONE ANTIQUE



MANDALADREAMS

FINISHED SIZE | 63" x 63"

FABRIC REQUIREMENTS

Fabric A	SOU-3639	1/6 yd.
Fabric B	SOU-2633	1/6 yd.
Fabric C	SOU-2634	1/6 yd.
Fabric D	SOU-3635	1/6 yd.
Fabric E	SOU-3637	1/6 yd.
Fabric F	SOU-2635	1/6 yd.
Fabric G	SOU-3632	1/6 yd.
Fabric H	SOU-2632	1/6 yd.
Fabric I	SOU-2630	1/3 yd.
Fabric J	SOU-3634	1/3 yd.
Fabric K	SOU-2631	1/3 yd.
Fabric L	SOU-2640	1/3 yd.
Fabric M	SOU-2636	1/2 yd.
Fabric N	SOU-2639	1/2 yd.
Fabric O	SOU-3631	7/8 yd.
Fabric P	SOU-3638	5/8 yd.
Fabric Q	SOU-3630	1/2 yd.
Fabric R	SOU-2638	7/8 yd.
Fabric S	SOU-3633	2 yd.

BACKING FABRIC

4 yds. (Suggested)

BINDING FABRIC

SOU-3638 (Fabric R) (included)

CUTTING DIRECTIONS

1/4" seam allowances are included.
WOF means width of fabric.

Cut one (1) 4" x WOF strip from fabrics **A, B, C, D, E, F, G**, then sub-cut eight (8) 4" perfect squares

Cut four (4) 4-1/2" perfect squares from fabric **H**.

Cut four (4) 4-7/8" perfect squares from fabric **I**.

Cut four (4) 4" perfect squares from fabric **L**.

Cut twelve (12) 4-7/8" perfect squares from fabric **J**

Cut four (4) 4-7/8" perfect squares from fabric **K**.

Cut eight (8) 4" perfect squares from fabric **K**.

Cut eight (8) 4-7/8" perfect squares from fabric **L**.

Cut four (4) 1-1/2" x 24 1/2" strips for inner border from fabric **M**

Cut four (4) 1-1/2" x 25 1/2" strips for inner border from fabric **M**

Cut four (4) 1-1/2" x 27 1/2" strips for outer border from fabric **N**

Cut four (4) 1-1/2" x 28 1/2" strips for outer border from fabric **N**

Cut twenty (20) 4-7/8" perfect squares from fabric **O**

Cut twenty (20) 4-7/8" perfect squares from fabric **P**

Cut four (4) 2-1/2" x 25 1/2" strips for middle border from fabric **Q**

Cut four (4) 2-1/2" x 27 1/2" strips for middle border from fabric **Q**

Cut four (4) 4-7/8" perfect squares from fabric **R**

Cut four (4) 4-1/2" perfect squares from fabric **R**.

Cut seven (7) 2-1/2" x 42" strips for binding from fabric **R**.

Cut forty four (44) 4-7/8" perfect squares from fabric **S**.

Cut sixteen (16) 4-1/2" perfect squares from fabric **S**

CONSTRUCTION

Sew all right sides together with 1/4" seam allowance.

- Draw a diagonal line on the wrong side of each 4-7/8" from fabric **S, L, R** and two (2) squares from fabric **O**.
- Referring to the Half-Square Triangle (HST) Pairing Chart, place a marked 4-7/8" square right sides together with a 4-7/8" pairing square as shown.
- Sew a 1/4" seam on each side of the drawn line.
- Cut apart on the line.
- Open and press.
- Makes 2 HST units.
- Make a total of 116 HST units according to the Total HST Units Chart.

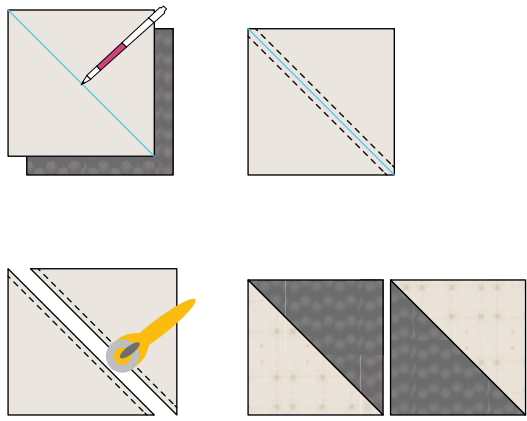


DIAGRAM 1

Half-Square Triangle Pairing Chart

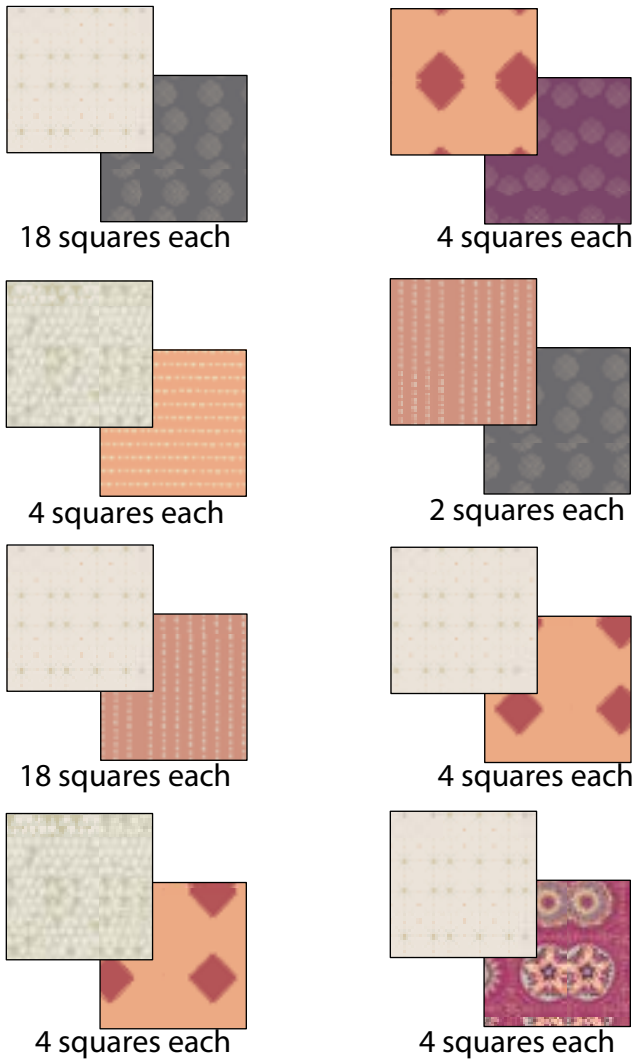


DIAGRAM 2

ASSEMBLING THE TOP

Sew all rights sides together with 1/4" seam allowance. Press open.

- Referring to the Quilt Assembly Diagram and noting placement and orientation, sew the HST units and 4-1/2" squares into 12 rows of 12 HST units/squares each. Join the rows.



DIAGRAM 3

- Take the four (4) 1-1/2" x 25 1/2" strips from fabric **M** and sew them together vertically for inner border.



DIAGRAM 4

- Take the four (4) 1-1/2" x 24 1/2" strips from fabric **M** and sew them together horizontally for inner border.



DIAGRAM 5

- Take the four (4) 2-½" x 27 ½" strips from fabric **Q** and sew them together vertically for middle border



DIAGRAM 6

- XX
- Take the four (4) 1-½" x 27 ½" strips from fabric **N** and sew them horizontally for outer border.



DIAGRAM 9

- Take the four (4) 2-½" x 25 ½" strips from fabric **Q** and sew them together horizontally for middle border



DIAGRAM 7

- Sew sixteen (16) of 4" perfect squares in the following order. (Use diagram below as a reference)

Top and Bottom borders



DIAGRAM 10

- Sew eighteen (18) of 4" perfect squares in the following order. (Use diagram below as a reference)



Left and Right borders



DIAGRAM 11

- Take the four (4) 1-½" x 28 ½" strips from fabric **N** and sew them vertically for outer border.



DIAGRAM 8

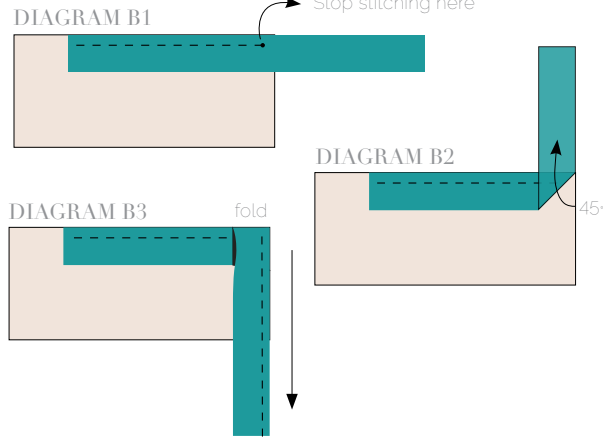


DIAGRAM 12

QUILT ASSEMBLY

Sew rights sides together.

- Place BACKING FABRIC on a large surface wrong side up. Stretch it with masking tape against that surface.
- Place BATTING on top of backing fabric.
- Place TOP on top of the batting with right side facing up. Smooth away wrinkles using your hands.
- Pin all layers together and baste with basting thread, using long stitches. You can also use safety pins to join the layers.
- Machine or hand quilt starting at the center and working towards the corners. Remember that quilting motifs are a matter of personal preference. Have fun choosing yours!
- After you finished, trim excess of any fabric or batting, squaring the quilt to proceed to bind it.



BINDING

Sew rights sides together.

- Cut enough strips $1\frac{1}{2}$ ' wide by the width of the fabric **E** to make a final strip 250' long. Start sewing the binding strip in the middle of one of the sides of the quilt, placing the strip right side down and leaving an approximated 5' tail. Sew with $\frac{1}{4}$ ' seam allowance (using straight stitch), aligning the strip's raw edge with the quilt top's raw edge.
- Stop stitching $\frac{1}{4}$ ' before the edge of the quilt (**DIAGRAM B 1**). Clip the threads. Remove the quilt from under the machine presser foot. Fold the strip in a motion of 45° and upward, pressing with your fingers (**DIAGRAM B2**). Hold this fold with your finger, bring the strip down in line with the next edge, making a horizontal fold that aligns with the top edge of the quilt (**DIAGRAM B3**). Start sewing at $\frac{1}{4}$ ' of the border, stitching all the layers. Do the same in the four corners of the quilt.
- Stop stitching before you reach the last 5 or 6 inches. Cut the threads and remove the quilt from under the machine presser foot. Lay the loose ends of the binding flat along the quilt edge, folding the ends back on themselves where they meet. Press them together to form a crease. Using this crease as the stitching line, sew the two open ends of the binding with right sides together (you can help yourself marking with a pencil if the crease is difficult to see).
- Trim seam to $\frac{1}{4}$ ' and press open. Complete the sewing. Turn binding to back of the quilt, turn raw edge inside and stitch by hand using blind stitch.



artgalleryfabrics.com

NOTE: While all possible care has been taken to ensure the accuracy of this pattern, We are not responsible for printing errors or the way in which individual work varies. Please read instructions carefully before starting the construction of this quilt. If desired, wash and iron your fabrics before starting to cut.

© 2016 Courtesy of Art Gallery Quilts LLC. All Rights Reserved.