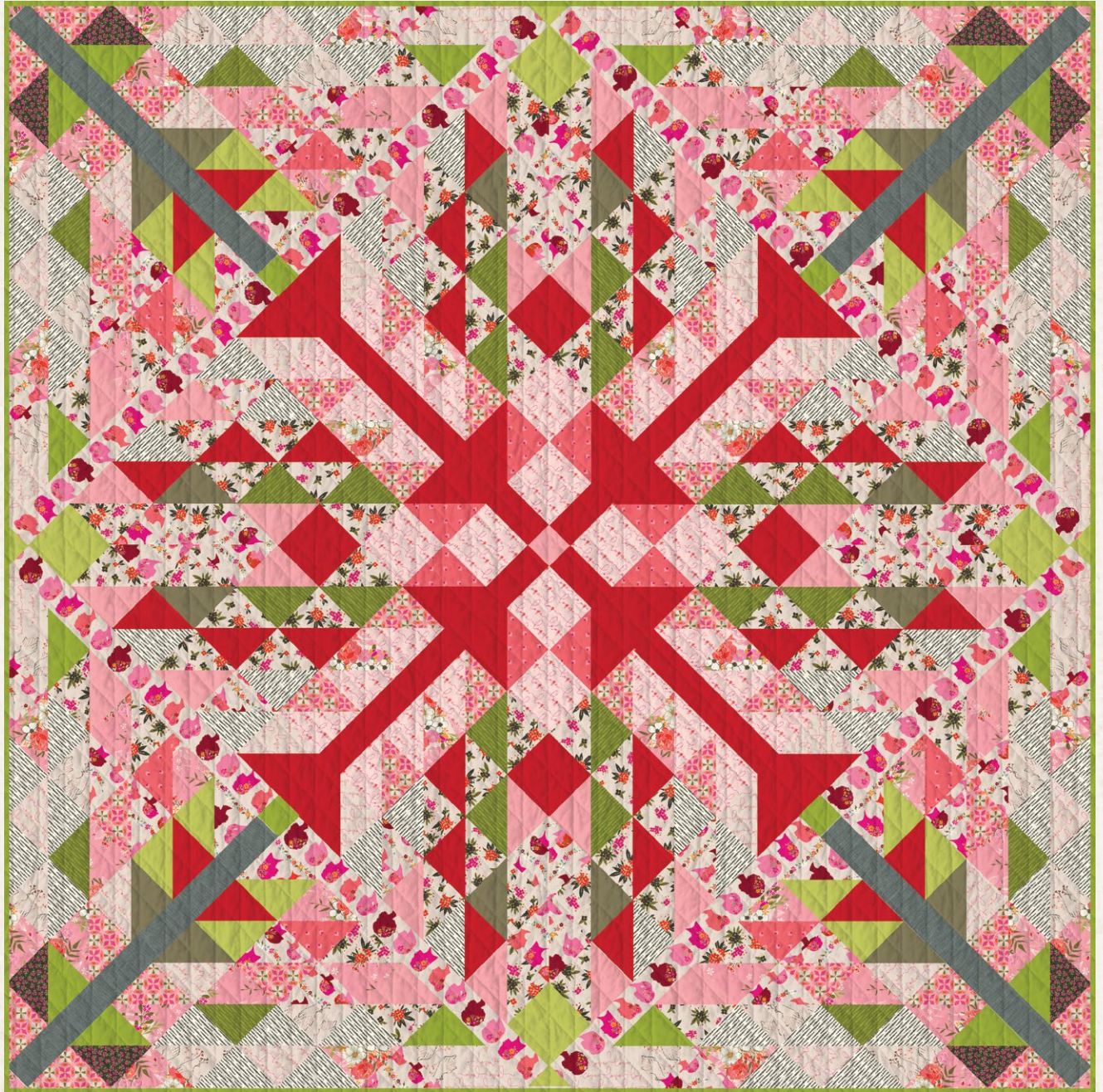


featuring OPEN HEART COLLECTION BY MAUREEN CRACKNELL

# KINDRED Souls



FREE PATTERN

XXXXXXXXXXXXXXXXXXXXXXXXXXXX





# KINDRED Souls

QUILT DESIGNED BY AGFstudio

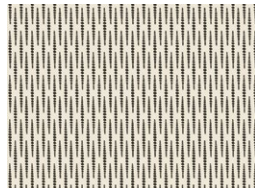


*open heart*

FABRICS DESIGNED BY MAUREEN CRACKNELL



OPH-14350  
FLOWERING LOVE



OPH-14351  
REFLECTIONS TINTED



OPH-14352  
CHERISHED GATHERINGS  
GLOOM



OPH-14353  
EVERLASTING TOKENS  
CORAL



OPH-14354  
BETTER TOGETHER



OPH-14356  
WRITTEN LOVE LOUD



OPH-14357  
SWEET FLORET CERISE



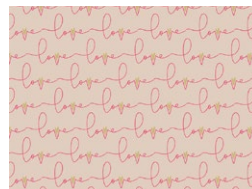
OPH-14358  
UNIQUE BEAUTY VIVID



OPH-24351  
REFLECTIONS VERDANT



OPH-24355  
BLOOMING ESSENCE



OPH-24356  
WRITTEN LOVE SOFT



FEEL THE DIFFERENCE © 2021 Courtesy of Art Gallery Quilts LLC. All Rights Reserved.



## FABRIC REQUIREMENTS

Fabric <b>A</b>	OPH-24356	½ yd.
Fabric <b>B</b>	OPH-14350	¾ yd.
Fabric <b>C</b>	OPH-14351	¾ yd.
Fabric <b>D</b>	OPH-14353	FQ.
Fabric <b>E</b>	PE-468	FQ.
Fabric <b>F</b>	PE-423	½ yd.
Fabric <b>G</b>	OPH-14354	FQ.
Fabric <b>H</b>	OPH-14357	FQ.
Fabric <b>I</b>	DEN-S-2002	⅜ yd.
Fabric <b>J</b>	PE-414	⅝ yd.
Fabric <b>K</b>	OPH-14358	1½ yd.
Fabric <b>L</b>	OPH-14352	⅞ yd.
Fabric <b>M</b>	PE-490	⅞ yd.
Fabric <b>N</b>	OPH-24355	½ yd.
Fabric <b>O</b>	OPH-24351	⅜ yd.
Fabric <b>P</b>	PE-411	⅜ yd.
Fabric <b>Q</b>	OPH-14356	⅝ yd.

**BACKING FABRIC**  
OPH-14351 5 yds *(Suggested)*

**BINDING FABRIC**  
Fabric **J** PE-414 *(Included)*

## CUTTING DIRECTIONS

¼" seam allowances are included.  
WOF means width of fabric.

- Fussy cut eight (8) 26½" x 2½" strips from fabric **K**.
- Cut ½" above the fuschia girl, and from there cut 2½" below. You will end up with four (4) strips with the girls looking to the right, and four (4) to the left.
- For fabric placement and cut, follow diagram 1:

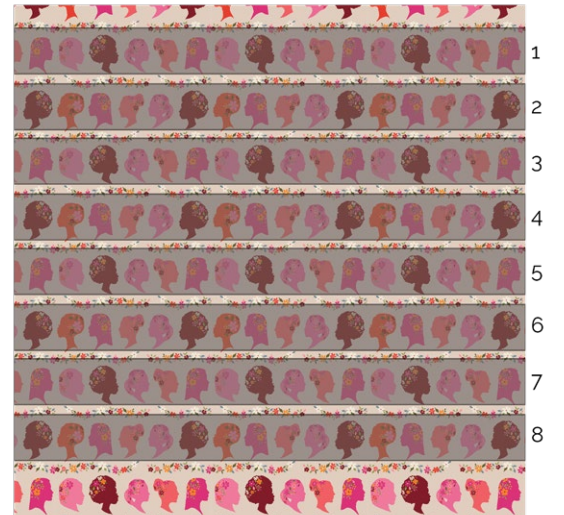


DIAGRAM 1



## CONSTRUCTION

*Sew all rights sides together with ¼" seam allowance.*

### Eight at a time technique:

- Take all the 9¾" x 9¾" squares to make half square triangles (HST).
- Place the squares face to face and draw diagonal lines making an X.
- Stitch at ¼" from each side of the lines you drew and cut on the drawn lines and on the vertical and horizontal center, or follow the pink lines on the diagram.

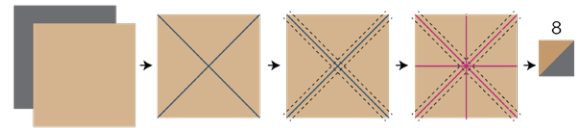


DIAGRAM 1



- Four (4) 9¾" squares from fabrics **K**.
- Twenty four (24) 4½" squares from fabric **K**.
- Three (3) 9¾" squares from fabric **A**.
- Eight (8) 4½" squares from fabric **A**.
- Eight (8) 4½" squares from fabric **B**.
- Six (6) 9¾" squares from fabric **B**.
- Four (4) 2" squares from fabric **B**.
- Six (6) 9¾" squares from fabric **C**.
- Sixteen (16) 4½" squares from fabric **C**.
- Two (2) 9¾" squares from fabric **D**.
- Two (2) 9¾" squares from fabric **E**.
- Eight (8) 4½" squares from fabric **F**.
- Two (2) 9¾" squares from fabric **F**.
- Eight (8) 2" squares from fabric **F**.
- Two (2) 9¾" squares from fabric **G**.
- Two (2) 9¾" squares from fabric **H**.
- Four (4) 26½" x 2½" strips from fabrics **I**.
- Two (2) 9¾" squares from fabric **J**.
- Four (4) 2½" squares from fabric **J**.
- Nine (9) 9¾" squares from fabric **L**.
- Six (6) 9¾" squares from fabric **M**.
- Eight (8) 4½" squares from fabric **M**.
- Four (4) 26½" x 2½" strips from fabrics **M**.
- Four (4) 9¾" squares from fabrics **N**.
- Eight (8) 4½" squares from fabric **N**.
- Three (3) 9¾" squares from fabric **O**.
- Four (4) 9¾" squares from fabrics **P**.
- Four (4) 2" squares from fabric **P**.
- Three (3) 9¾" squares from fabric **Q**.
- Sixteen (16) 4½" squares from fabric **Q**.











## BINDING

*Sew rights sides together.*

- Cut enough strips  $1\frac{1}{2}$ " wide by the width of the fabric **J** to make a final strip 306" long. Start sewing the binding strip in the middle of one of the sides of the quilt, placing the strip right side down and leaving an approximated 5" tail. Sew with  $\frac{1}{4}$ " seam allowance (using straight stitch), aligning the strip's raw edge with the quilt top's raw edge.
- Stop stitching  $\frac{1}{4}$ " before the edge of the quilt (DIAGRAM B 1). Clip the threads. Remove the quilt from under the machine presser foot. Fold the strip in a motion of  $45^\circ$  and upward, pressing with your fingers (DIAGRAM B 2). Hold this fold with your finger, bring the strip down in line with the next edge, making a horizontal fold that aligns with the top edge of the quilt (DIAGRAM B 3). Start sewing at  $\frac{1}{4}$ " of the border, stitching all the layers. Do the same in the four corners of the quilt.
- Stop stitching before you reach the last 5 or 6 inches. Cut the threads and remove the quilt from under the machine presser foot. Lay the loose ends of the binding flat along the quilt edge, folding the ends back on themselves where they meet. Press them together to form a crease. Using this crease as the stitching line, sew the two open ends of the binding with right sides together (you can help yourself marking with a pencil if the crease is difficult to see).
- Trim seam to  $\frac{1}{4}$ " and press open. Complete the sewing. Turn binding to back of the quilt, turn raw edge inside and stitch by hand using blind stitch.

