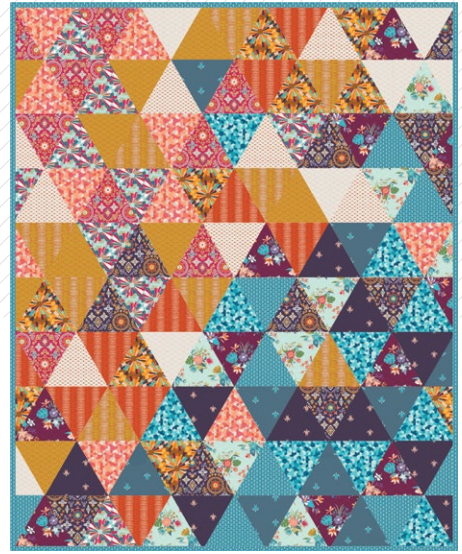


Ambience

QUILT DESIGNED BY MATTHEW BOUDREAU

AURA

FABRICS DESIGNED BY MATTHEW BOUDREAU



KAUAI SUNRISE



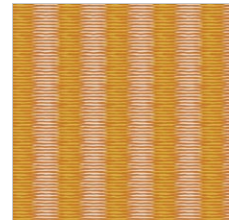
AUR-44900
ALOHA SPIRIT HIBISCUS



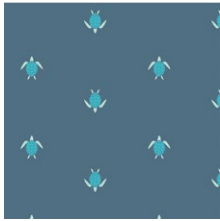
AUR-44901
LOULU FANS SAND



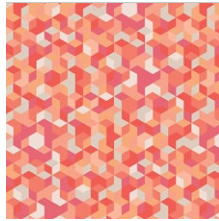
AUR-44902
LAKI ISLAND DAYLIGHT



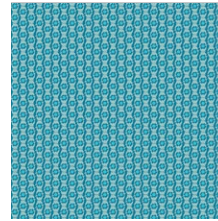
AUR-44903
TIKI WAY GOLDEN



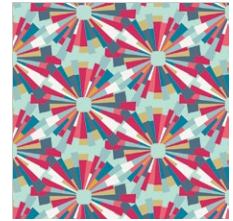
AUR-44904
HAWAIIAN HONU DUSK



AUR-44905
MAU LOA CORAL



AUR-44906
HULA DOLPHINS OCEAN

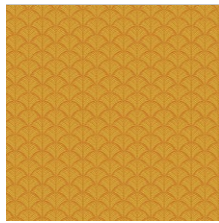


AUR-44907
LEI BURST PLUMERIA

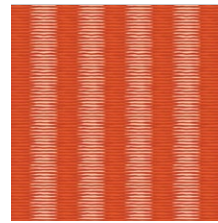
MAUI SUNSET



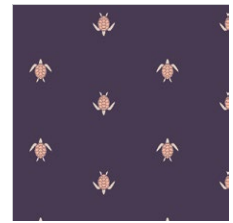
AUR-54900
ALOHA SPIRIT WINDWARD



AUR-54901
LOULU FANS SUN



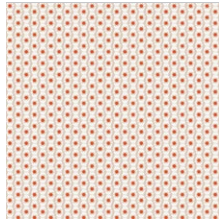
AUR-54903
TIKI WAY PAPAYA



AUR-54904
HAWAIIAN HONU DAWN



AUR-54905
MAU LOA SEABED



AUR-54906
HULA DOLPHINS VOG



AUR-54907
LEIS BURST PINEAPPLE



AUR-54902
LAKI ISLAND NIGHTFALL





FINISHED SIZE | 70" X 87"

FABRIC REQUIREMENTS

Fabric A	AUR-44900	5/8 yd.
Fabric B	AUR-44901	5/8 yd.
Fabric C	AUR-44902	5/8 yd.
Fabric D	AUR-44903	5/8 yd.
Fabric E	AUR-44904	5/8 yd.
Fabric F	AUR-44905	5/8 yd.
Fabric G	AUR-44906	1 yd.
Fabric H	AUR-44907	5/8 yd.
Fabric I	AUR-54900	5/8 yd.
Fabric J	AUR-54901	5/8 yd.
Fabric K	AUR-54903	5/8 yd.
Fabric L	AUR-54904	5/8 yd.
Fabric M	AUR-54905	5/8 yd.
Fabric N	AUR-54906	5/8 yd.
Fabric O	AUR-54907	5/8 yd.
Fabric P	AUR-54902	5/8 yd.

BACKING FABRIC
AUR-44905 5 yds. *(Suggested)*

BINDING FABRIC
AUR-44906 (Fabric G) *(Included)*

CUTTING PREPERATIONS

Fabric A

- Cut Eight (8) "Template 1"
- Cut one (1) "Template 2" Left

Fabric B

- Cut Five (5) "Template 1"
- Cut Two (2) "template 2" left.

Fabric C

- Cut eight (8) "Template 1".
- Cut One (1) "Template 2 Right".

Fabric D

- Cut Nine (9) "Template 1".

Fabric E

- Cut eight (8) "Template 1".
- Cut One (1) "Template 2 Right".

Fabric F

- Cut Nine (9) "Template 1".
- Cut One (1) "Template 2 left".

Fabric G

- Cut Seven (7) "Template 1"
- Cut Two (2) "Template 2 right".

Fabric H

- Cut eight (8) "Template 1".
- Cut One (1) "Template 2 Right"

Fabric I

- Cut Nine (9) "Template 1".
- Cut One (1) "Template 2 left".
- Cut One (1) "Template 2 Right"

Fabric J

- Cut Seven (7) "Template 1"
- Cut Two (2) "Template 2 right".

Fabric K

- Cut Nine (9) "Template 1"
- Cut One (1) "Template 2 Left".

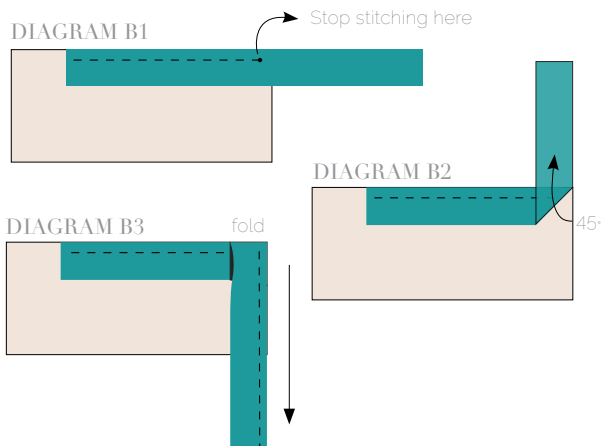
Fabric L

- Cut Nine (9) "Template 1"
- Cut One (1) "Template 2 Left"

BINDING

Sew rights sides together.

- Cut enough strips 1 ½" wide by the width of the fabric to make a final strip 324" long. Start sewing the binding strip in the middle of one of the sides of the quilt, placing the strip right side down and leaving an approximated 5" tail. Sew with ¼" seam allowance (using straight stitch), aligning the strip's raw edge with the quilt top's raw edge.
- Stop stitching ¼" before the edge of the quilt (DIAGRAM B 1). Clip the threads. Remove the quilt from under the machine presser foot. Fold the strip in a motion of 45° and upward, pressing with your fingers (DIAGRAM B 2). Hold this fold with your finger, bring the strip down in line with the next edge, making a horizontal fold that aligns with the top edge of the quilt (DIAGRAM B 3). Start sewing at ¼" of the border, stitching all the layers. Do the same in the four corners of the quilt.
- Stop stitching before you reach the last 5 or 6 inches. Cut the threads and remove the quilt from under the machine presser foot. Lay the loose ends of the binding flat along the quilt edge, folding the ends back on themselves where they meet. Press them together to form a crease. Using this crease as the stitching line, sew the two open ends of the binding with right sides together (you can help yourself marking with a pencil if the crease is difficult to see).
- Trim seam to ¼" and press open. Complete the sewing. Turn binding to back of the quilt, turn raw edge inside and stitch by hand using blind stitch.



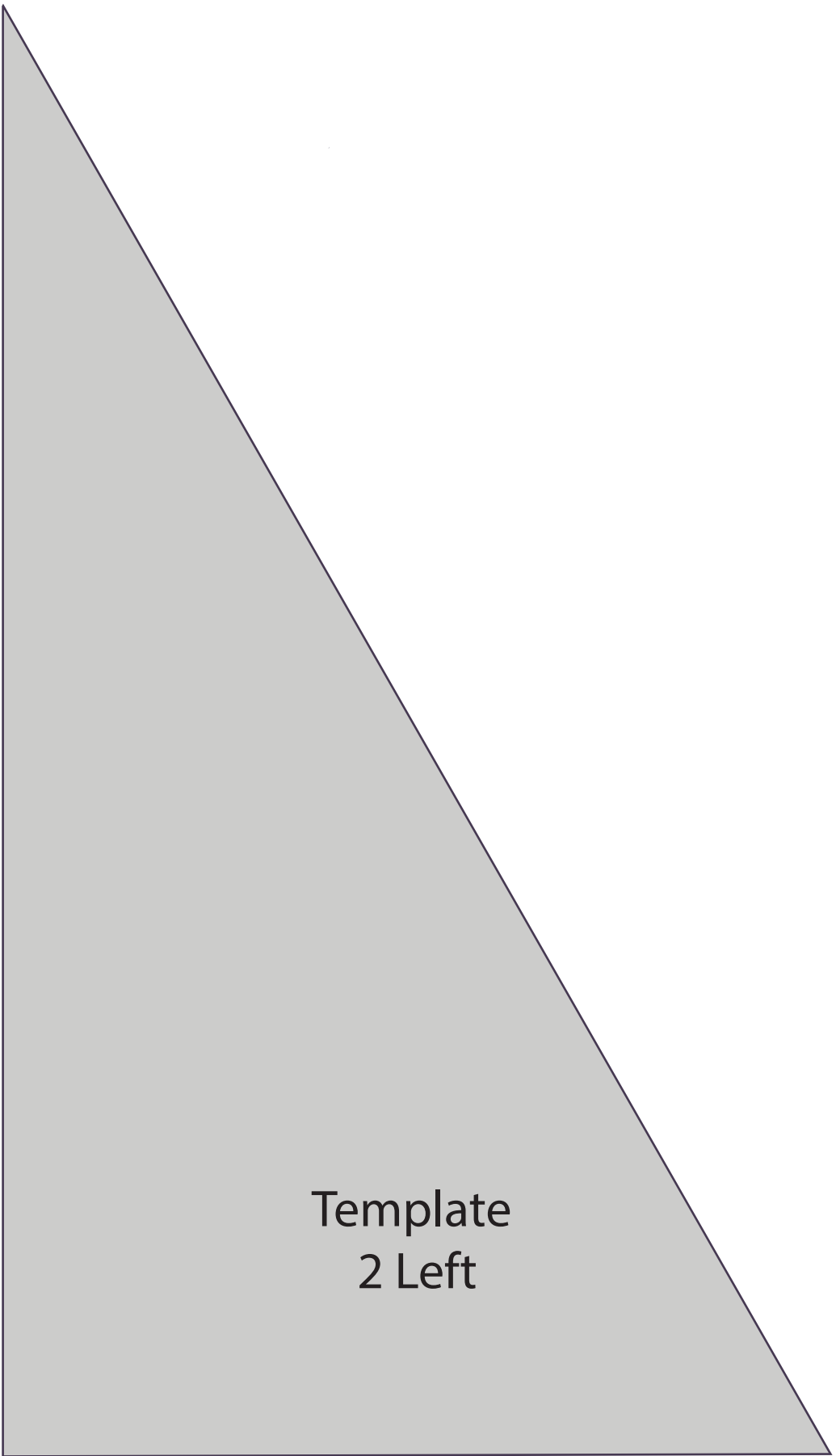
Congratulations
& enjoy



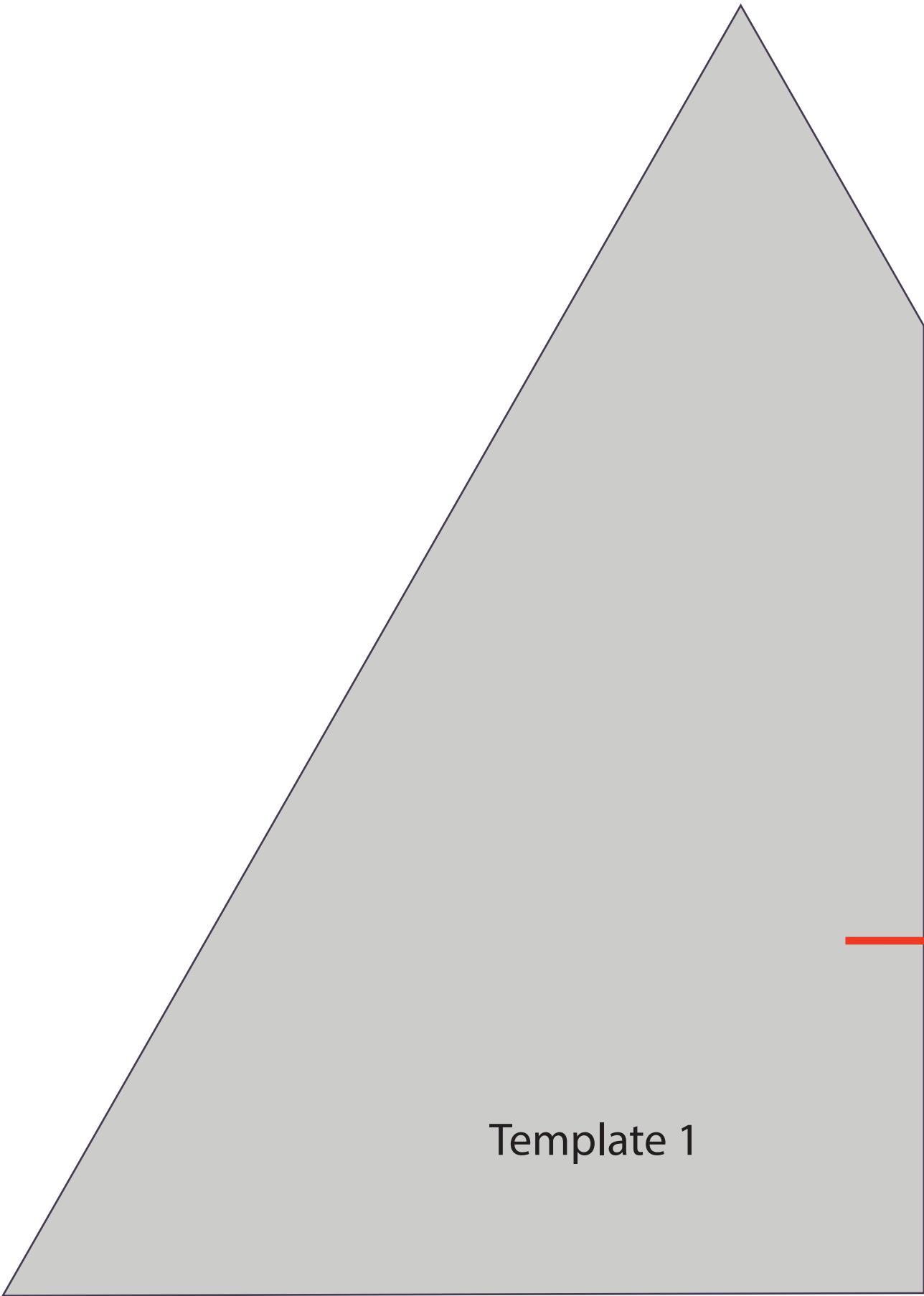
artgalleryfabrics.com

NOTE: While all possible care has been taken to ensure the accuracy of this pattern, We are not responsible for printing errors or the way in which individual work varies. Please read instructions carefully before starting the construction of this quilt. If desired, wash and iron your fabrics before starting to cut.

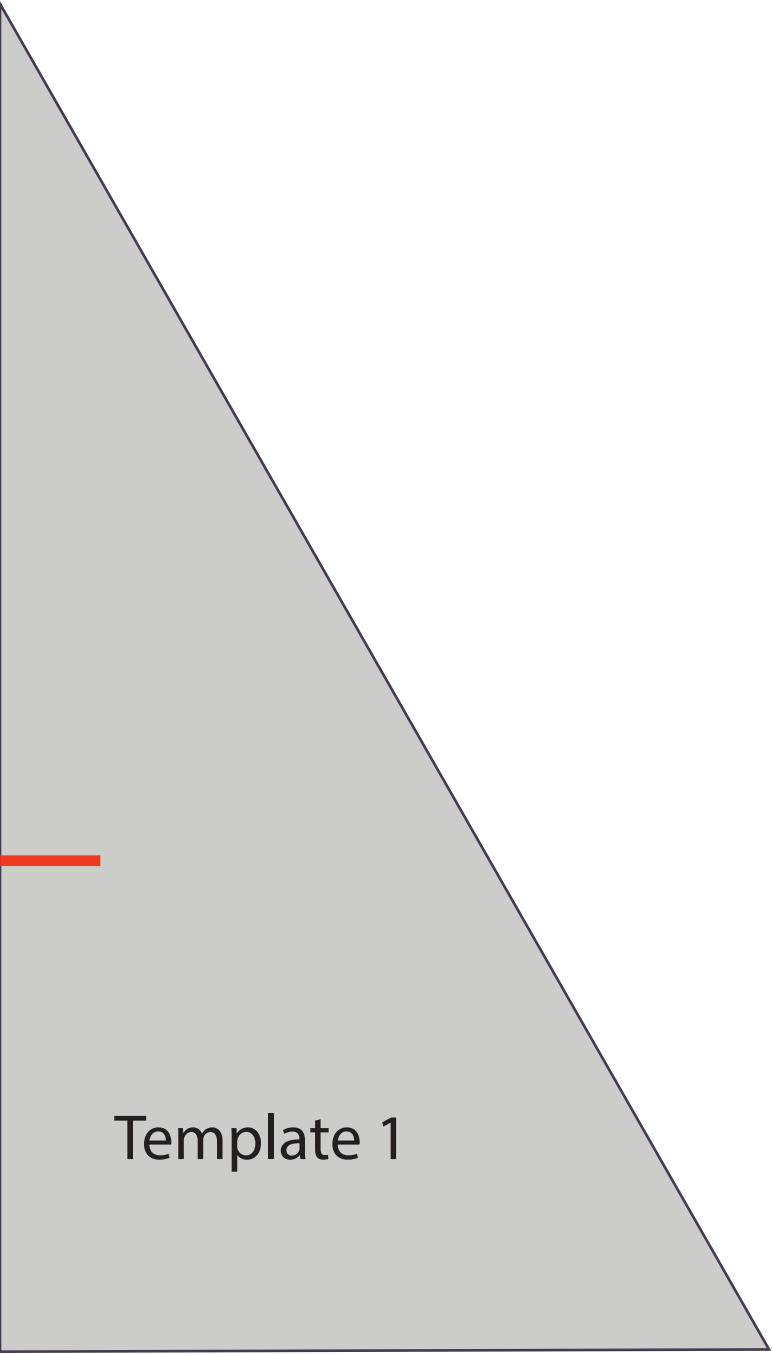
© 2018 Courtesy of Art Gallery Quilts LLC. All Rights Reserved.



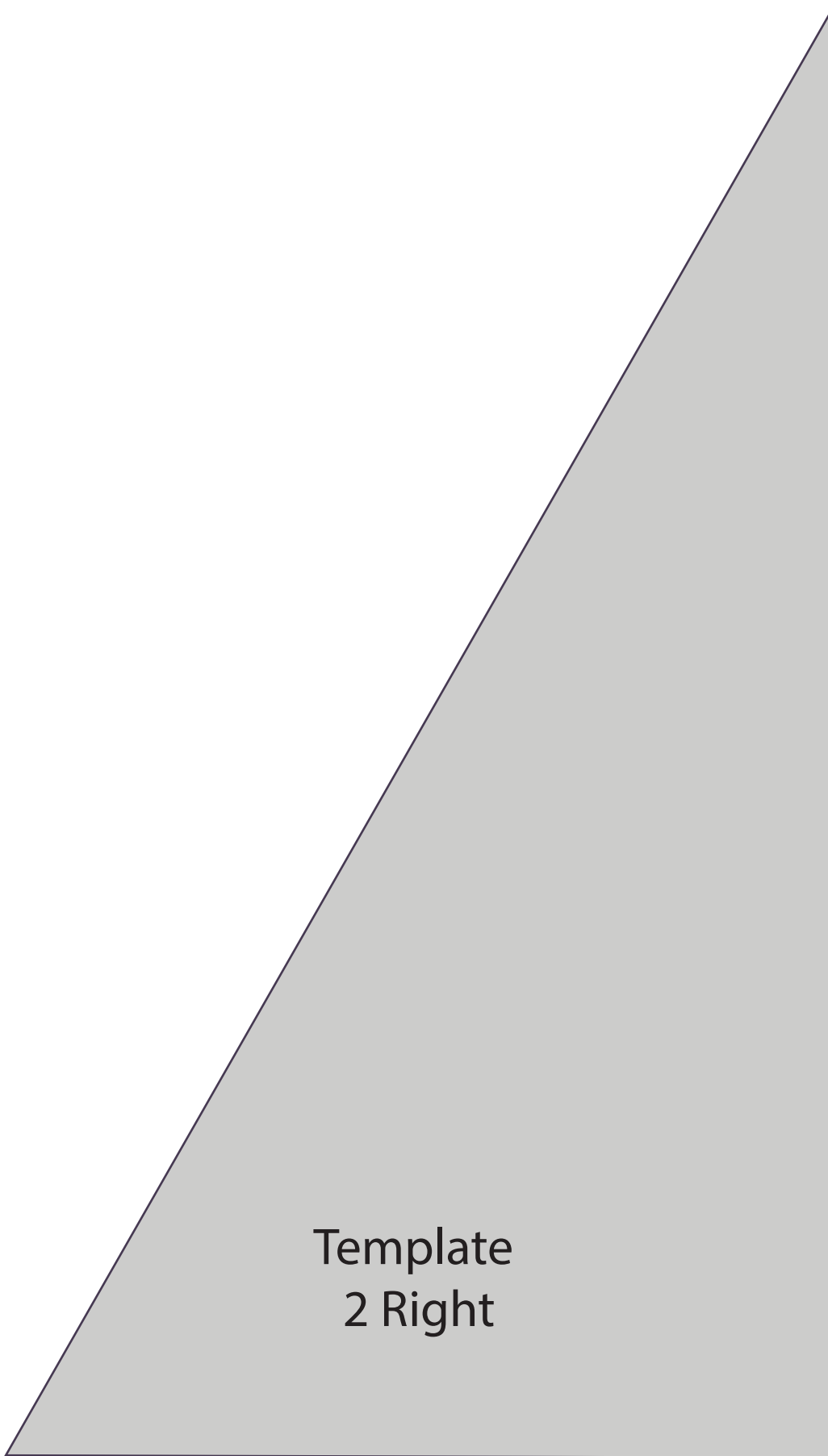
Template
2 Left



Template 1



Template 1



Template
2 Right