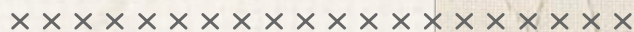
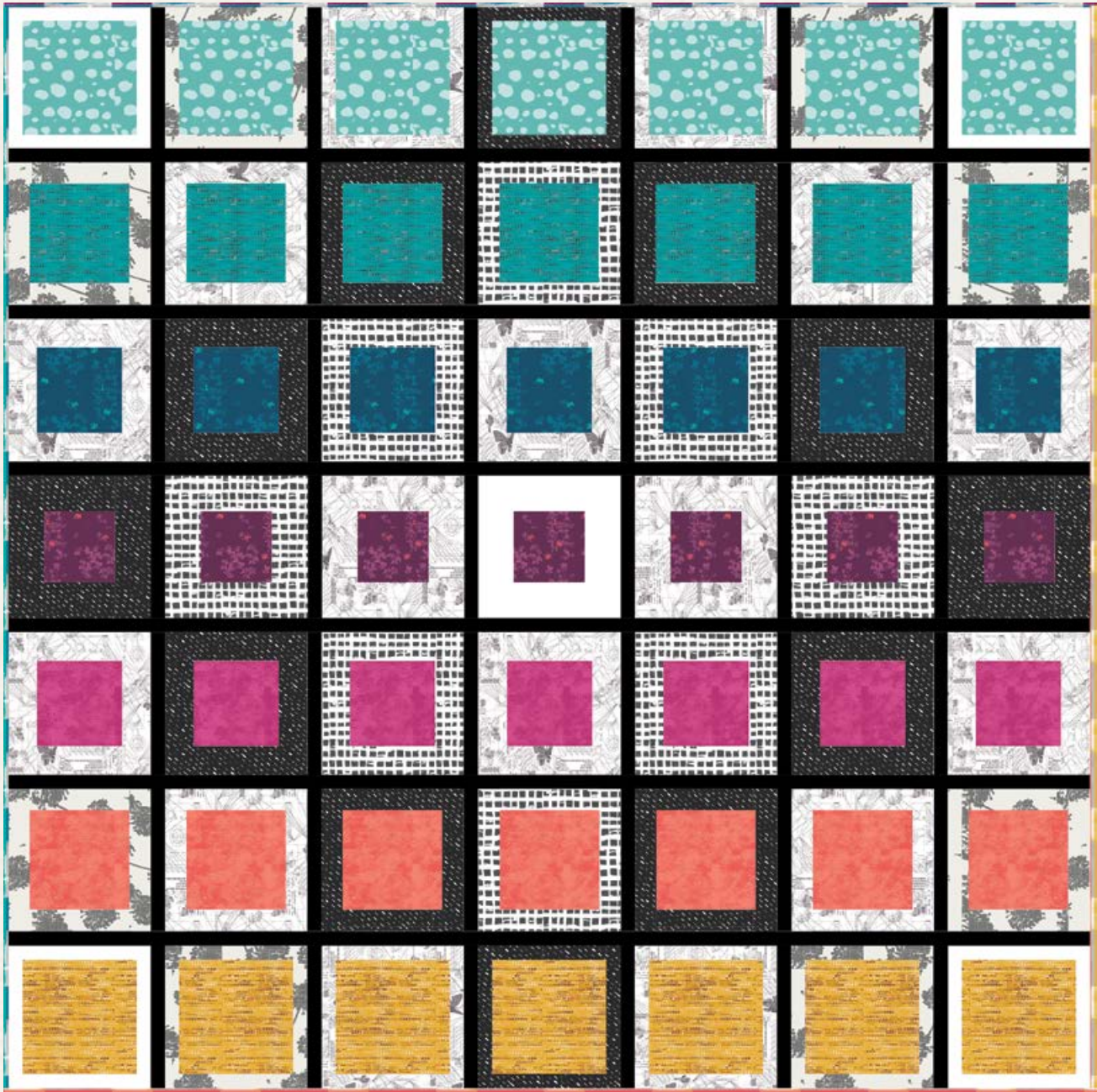




FLUX





FLUX

Katarina Roccella

QUILT DESIGNED BY KATARINA ROCCELLA



COLOR OPTION

AVANTGARDE

FABRICS DESIGNED BY KATARINA ROCCELLA

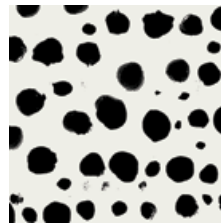
ALUSSION



AVG-18900
STEPS ABOVE MOONBOW



AVG-18901
FLUXUS TEAL



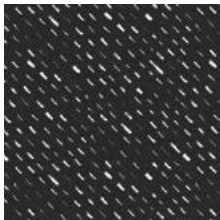
AVG-18903
TENTATIVE DOT INK



AVG-18904
NEON-FLIES DENSE



AVG-18905
VANGUARDEN KEKMO



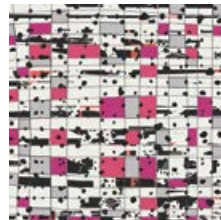
AVG-18906
CHALK ON CHARCOAL



AVG-18908
CUT-UPS



AVG-18910
UNINHIBITED FASHION



AVG-18911
A NEW GRID



AVG-18912
SIMULTANEOUS

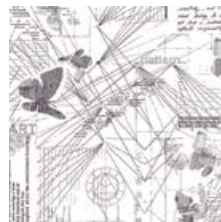
ENLIGHTENMENT



AVG-28900
STEPS ABOVE PRISM



AVG-28901
FLUXUS OCHRE



AVG-28902
BAUHAUS DISSECTION



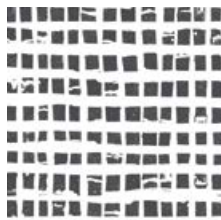
AVG-28903
TENTATIVE DOT TONIC



AVG-28904
NEO-FLIES PROFOUND



AVG-28905
VANGUARDEN RIMA



AVG-28907
SEPARATION IMPERFEC



AVG-28909
SPECTACLE PIET



AVG-28910
UNINHIBITED BASK



AVG-28913
GREY TARAXACUM



FLUX

FINISHED SIZE | 76" x 76"

FABRIC REQUIREMENTS

Fabric A	AVG-18904	¼ yd.
Fabric B	AVG-18906	1 yd.
Fabric C	AVG-18901	½ yd.
Fabric D	AVG-18910	½ yd.
Fabric E	AVG-28903	½ yd.
Fabric F	AVG-28904	½ yd.
Fabric G	AVG-28910	½ yd.
Fabric H	AVG-28907	¾ yd.
Fabric I	AVG-28901	½ yd.
Fabric J	AVG-28913	⅝ yd.
Fabric K	AVG-28902	1 ¼ yds.
Fabric L	PE-433	⅝ yd.
Fabric M	PE-413	1 ¼ yds.

BACKING FABRIC

AVG-18912 - 4 ¾ yds. (Suggested)

BINDING FABRIC

AVG-28900- ⅝ yd.

CUTTING DIRECTIONS

¼" seam allowances are included.
WOF means width of fabric.

- Seven (7) 5 1/2" x 5 1/2" squares from Fabric **A**
- Seven (7) 7 1/2" x 7 1/2" squares from Fabric **C** and **G**
- Seven (7) 8 1/2" x 8 1/2" squares from Fabric **E** and **I**
- Seven (7) 6 1/2" x 6 1/2" squares from Fabric **D** and Fabric **F**
- Eight (8) 2" x 10 1/2" strips from Fabric **B**
- Eight (8) 2" x 7 1/2" strips from Fabric **B**
- Four (4) 1 1/2" x 8 1/2" strips from Fabric **B**
- Four (4) 1 1/2" x 10 1/2" strips from Fabric **B**
- Eight (8) 2 1/2" x 6 1/2" strips from Fabric **B**
- Eight (8) 2 1/2" x 10 1/2" strips from Fabric **B**
- Four (4) 3" x 5 1/2" strips from Fabric **B**
- Four (4) 3" x 10 1/2" strips from Fabric **B**

- Four (4) 3" x 5 1/2" strips from Fabric **H**
- Four (4) 3" x 10 1/2" strips from Fabric **H**
- Four (4) 2" x 7 1/2" strips from Fabric **H**
- Four (4) 2" x 10 1/2" strips from Fabric **H**
- Eight (8) 2 1/2" x 6 1/2" strips from Fabric **H**
- Eight (8) 2 1/2" x 10 1/2" strips from Fabric **H**
- Eight (8) 1 1/2" x 8 1/2" strips from Fabric **J**
- Eight (8) 1 1/2" x 10 1/2" strips from Fabric **J**
- Eight (8) 2" x 10 1/2" strips from Fabric **J**
- Eight (8) 2" x 7 1/2" strips from Fabric **J**
- Four (4) 3" x 10 1/2" strips from Fabric **K**
- Four (4) 3" x 5 1/2" strips from Fabric **K**
- Twelve (12) 2 1/2" x 10 1/2" strips from Fabric **K**
- Twelve (12) 2 1/2" x 6 1/2" strips from Fabric **K**
- Eight (8) 2" x 10 1/2" strips from Fabric **K**
- Eight (8) 2" x 7 1/2" strips from Fabric **K**
- Eight (8) 1 1/2" x 8 1/2" strips from Fabric **K**
- Eight (8) 1 1/2" x 10 1/2" strips from Fabric **K**
- Eight (8) 1 1/2" x 8 1/2" strips from Fabric **L**
- Eight (8) 1 1/2" x 10 1/2" strips from Fabric **L**
- Two (2) 3" x 10 1/2" strips from Fabric **L**
- Two (2) 3" x 5 1/2" strips from Fabric **L**
- Twelve (12) 1 1/2" x WOF strips from Fabric **M**
- Forty Two (42) 1 1/2" x 10 1/2" strips from Fabric **M**

CONSTRUCTION

Sew all rights sides together with ¼" seam allowance.

- Take a 8 1/2" x 8 1/2" square from Fabric **E** and sew two 1 1/2" x 8 1/2" strips from Fabric **L** to the top and bottom of your square. (Diagram 1)

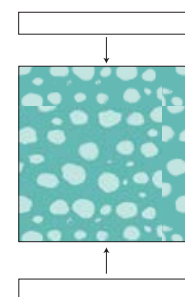


DIAGRAM 1

• Take two 1 1/2' x 10 1/2' strips from Fabric L and sew to each side of the piece created in Diagram 1. (Diagram 2)

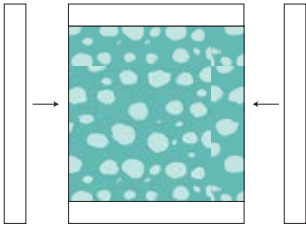


DIAGRAM 2

- Repeat this same process to sew together all of your blocks. Follow quilt illustration as a guide.
- Each row has different size squares in the center of each block as well as different size strips that get sewn to the center block. Diagram 3 shows the sizes of each square and strips for each row. Row 5 is the same as row 3 and row 6 and the same as row 2 and row 7 is the same as row 1.

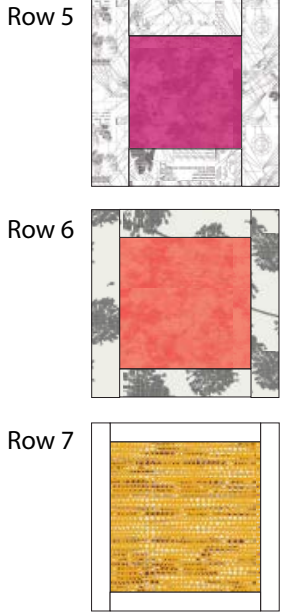
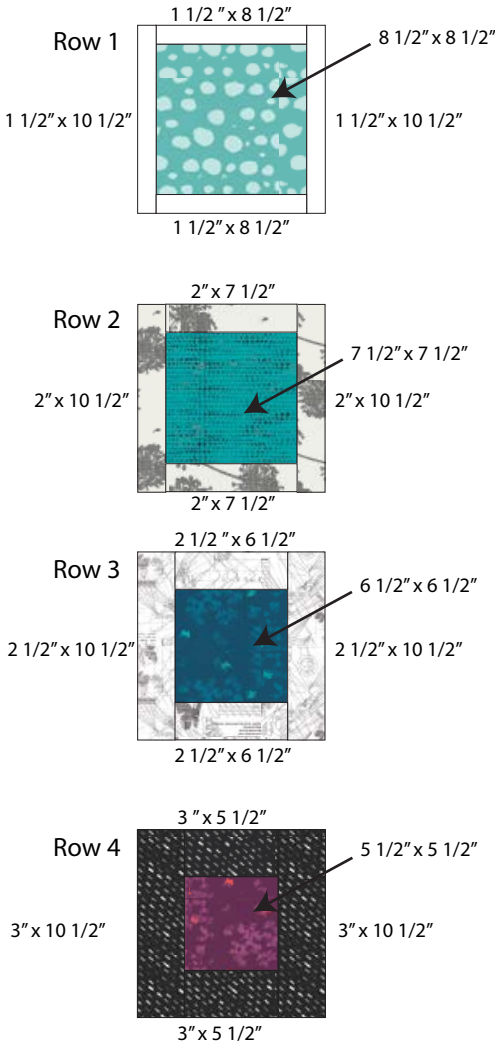


DIAGRAM 3

ASSEMBLING THE TOP

Sew all rights sides together with 1/4" seam allowance. Press open.

- Once your blocks are complete it's time to sew up your rows. Following the quilt illustration lay out your blocks for your first row and place a 1 1/2' x 10 1/2' strip from Fabric M inbetween each block . (Diagram 4)
- Sew a 1 1/2' x 10 1/2' strip from Fabric M to the right side of each block and then sew blocks together to get your first row. Follow this process for your remaining rows.

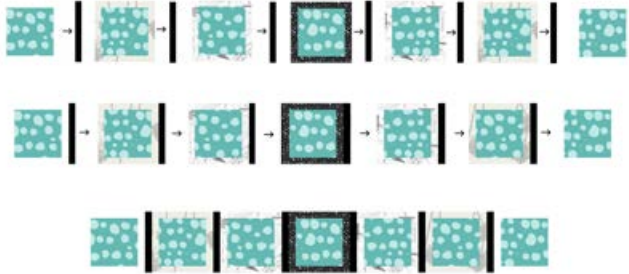


DIAGRAM 4

- Next take the twelve 1 1/2' x WOF strips from Fabric M and sew two strips together to make one long strip.
- Make a total of 6 long strips. (Diagram 5)

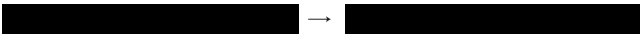


DIAGRAM 5

BINDING

- Inbetween each row sew one of your 6 long strips. (Diagram 6)

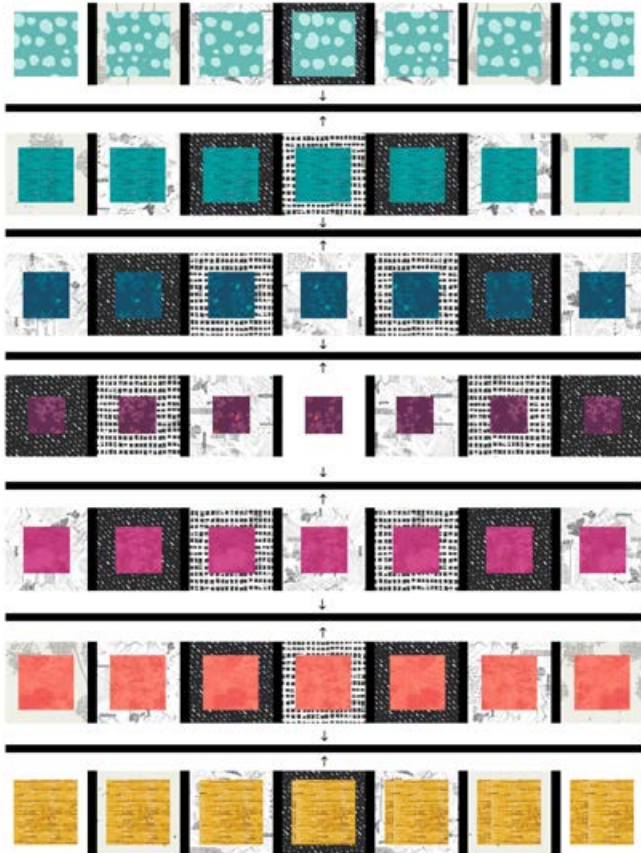


DIAGRAM 6

QUILT ASSEMBLY

Sew rights sides together.

- Place BACKING FABRIC on a large surface wrong side up. Stretch it with masking tape against that surface.
- Place BATTING on top of backing fabric.
- Place TOP on top of the batting with right side facing up. Smooth away wrinkles using your hands.
- Pin all layers together and baste with basting thread, using long stitches. You can also use safety pins to join the layers.
- Machine or hand quilt starting at the center and working towards the corners. Remember that quilting motifs are a matter of personal preference. Have fun choosing yours!
- After you finished, trim excess of any fabric or batting, squaring the quilt to proceed to bind it.

Sew rights sides together.

- I suggest doing the Double Fold Binding, which has double thickness.
- Cut enough $2\frac{1}{4}$ " wide strips by the width (WOF) from the AVG-28900 to make a final strip 314" long.
- Fold and press the long strip in half lengthwise (on the shorter side), wrong sides together.
- Cut the beginning of the binding strip at a 45° angle. Start sewing the binding strip in the middle of one of the sides of the quilt, leaving approximately 5" long tail loose. Sew with $\frac{1}{4}$ " seam allowance (using straight stitch), aligning the strip's raw edge with the quilt top's raw edge. Pin in place if needed.
- When your needle is $\frac{1}{4}$ " from the corner, turn the quilt and stitch off at a 45° angle and stitch reaching the end of that corner (diagram 1).

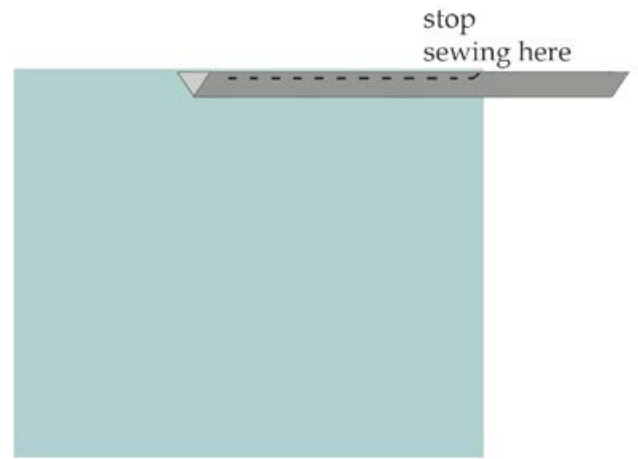


diagram 1

- Turn the quilt and fold the strip in a motion of 45° and upward, pressing with your fingers, using the angled stitch as your guide (diagram 2).

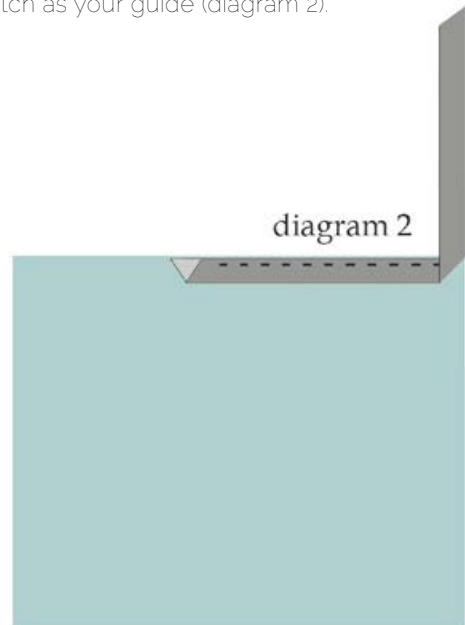
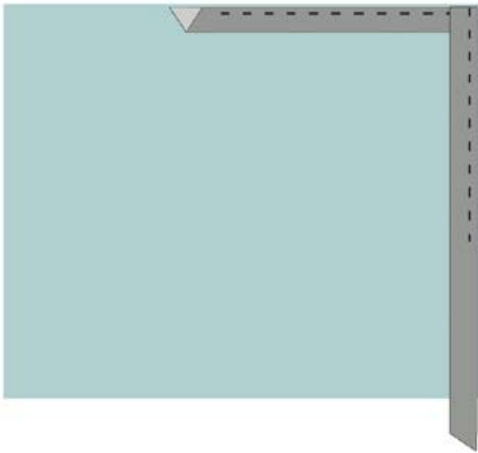


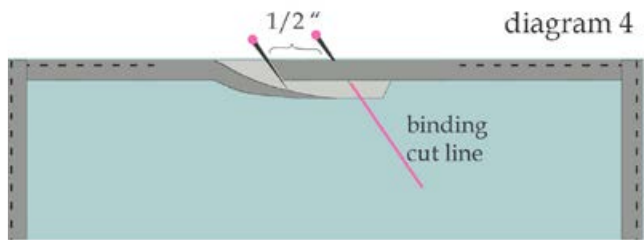
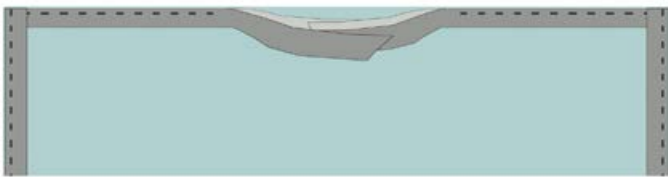
diagram 2

- Hold this fold with your finger, bring the strip down in line with the next edge, making a horizontal fold that aligns with the top edge of the quilt (diagram 3)

diagram 3

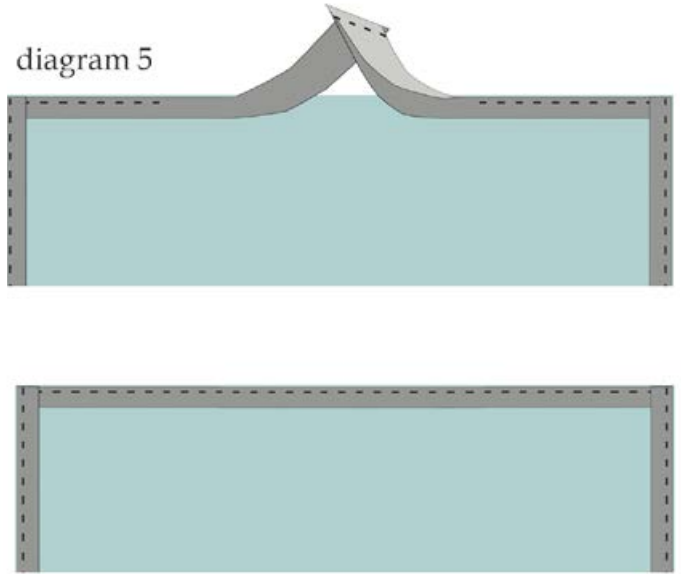


- Start sewing at $\frac{1}{4}$ ' of the border, stitching all the layers. Do the same in the four corners of the quilt.
- When approaching the starting point, stop stitching at least 10" from where you started, leaving another tail, at least 6" long. There will be a gap between the stitched bindings. Unfold the ending binding and align it nicely with the quilt edge. Open the ending strip toward the quilt, right sides together and place the beginning of the binding strip that is cut at 45° inside the open part of the ending binding strip. Using a pencil or a pin, mark the line on the ending binding strip where the begging piece lays (diagram 4).



- Mark another parallel line to the first one, precisely $\frac{1}{2}$ " distant, so that it can be lined and sewn perfectly with the other end, using $\frac{1}{4}$ " seam allowance. Pin and sew the ends, right sides together (diagram 5).

diagram 5



artgalleryfabrics.com

NOTE: While all possible care has been taken to ensure the accuracy of this pattern, We are not responsible for printing errors or the way in which individual work varies. Please read instructions carefully before starting the construction of this quilt. If desired, wash and iron your fabrics before starting to cut.

© 2015 Courtesy of Art Gallery Quilts LLC. All Rights Reserved.