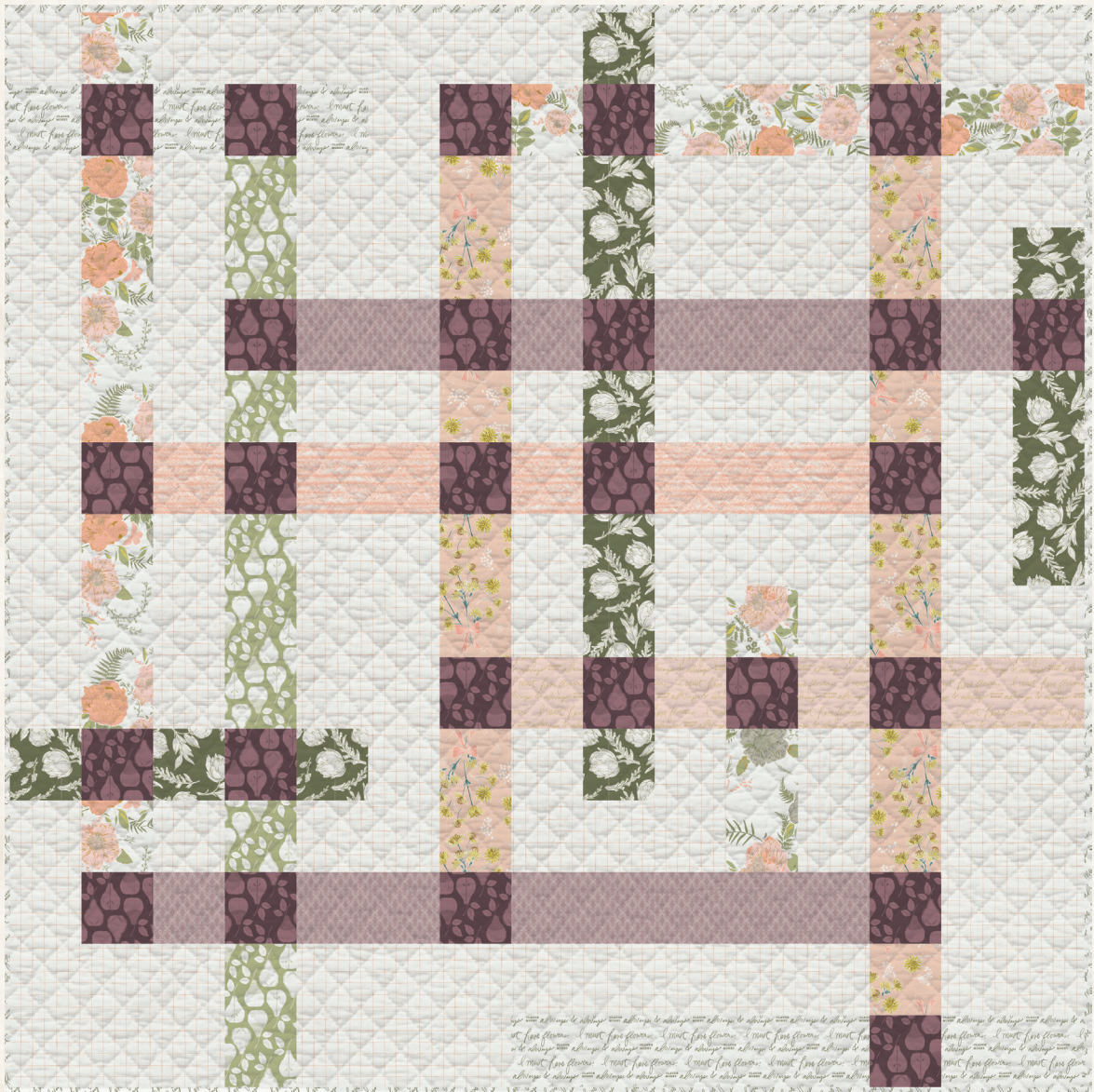
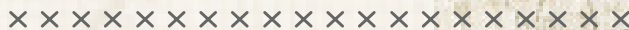




HARVEST



FREE PATTERN

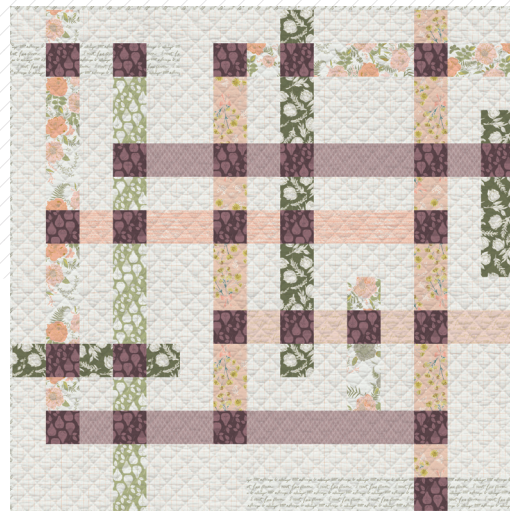


HARVEST

QUILT DESIGNED BY BONNIE CHRISTINE



FABRICS DESIGNED BY BONNIE CHRISTINE



FOLK & FLORA



01H-37500
FORAGED GARLAND PEONY



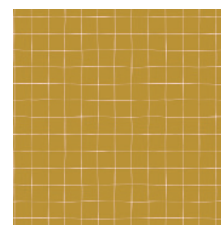
01H-37509
SIMPLE LIVING



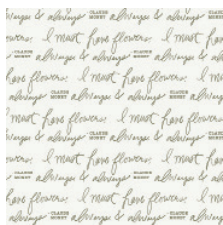
01H-37507
FLORET ROOST PETAL



01H-37504
COLLECTED STEMS BRIGHT



01H-37506
AERIAL CLAY



01H-37503
ALWAYS & ALWAYS THYME



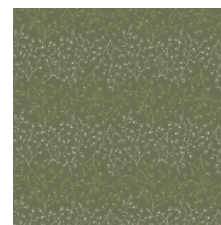
01H-37501
BRISTLING DELICATE



01H-37505
SWEET HARVEST OLIVE



01H-37502
UNRULY TERRACE EARTH

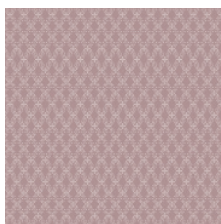


01H-37508
VERDURE FIELD

PRESSED FLOWERS



01H-47500
FORAGED GARLAND GOLDEN



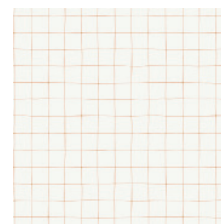
01H-47510
CULTIVATED



01H-47507
FLORET ROOST DELIGHT



01H-47504
COLLECTED STEMS DUSTY



01H-47506
AERIAL BLUSH



01H-47503
ALWAYS & ALWAYS LUMINANCE



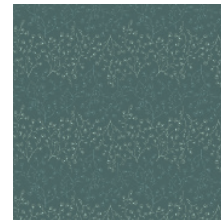
01H-47501
BRISTLING BALMY



01H-47505
SWEET HARVEST RARE



01H-47502
UNRULY TERRACE SHADE



01H-47508
VERDURE SPRUCE





FINISHED SIZE | 68" x 68"

FABRIC REQUIREMENTS

| | | |
|-----------------|-------------|-----------|
| Fabric A | GTH - 47506 | 2 1/8 yd. |
| Fabric B | GTH - 37503 | 3/4 yd. |
| Fabric C | GTH - 47505 | 5/8 yd. |
| Fabric D | GTH - 37500 | 1/2 yd. |
| Fabric E | GTH - 37505 | 1/3 yd. |
| Fabric F | GTH - 47510 | 1/3 yd. |
| Fabric G | GTH - 47503 | 1/4 yd. |
| Fabric H | GTH - 47504 | 1/3 yd. |
| Fabric I | GTH - 47501 | 1/4 yd. |
| Fabric J | GTH - 37502 | 1/3 yd. |

BACKING FABRIC

GTH - 37500 4 1/4 yds. *(Suggested)*

BINDING FABRIC

GTH - 37503 (Fabric **B**) *(Included)*

CUTTING PREPARATIONS

Fabric A

- ⊙ Cut fourteen (14) 5" x WOF strips. Subcut into:
 - ⊙ One (1) 5" x 36 1/2" strip
 - ⊙ One (1) 5" x 27 1/2" strip
 - ⊙ Nine (9) 5" x 14" strips
 - ⊙ Fourteen (14) 5" x 9 1/2" strips
 - ⊙ Thirty-six (36) 5" x 5" squares

Fabric B

- ⊙ Cut two (2) 5" x WOF strips. Subcut into:
 - ⊙ One (1) 5" x 23" strip
 - ⊙ One (1) 5" x 9 1/2" strip
 - ⊙ Three (3) 5" x 5" squares

Fabric C

- ⊙ Cut four (4) 5" x WOF strips. Subcut into:
 - ⊙ Twenty-six (26) 5" x 5" squares

Fabric D

- ⊙ Cut three (3) 5" x WOF strips. Subcut into:
 - ⊙ One (1) 5" x 14" strip
 - ⊙ One (1) 5" x 9 1/2" strip
 - ⊙ Thirteen (13) 5" x 5" squares

Fabric E

- ⊙ Cut two (2) 5" x WOF strips. Subcut into:
 - ⊙ Nine (9) 5" x 5" squares

Fabric F

- ⊙ Cut two (2) 5" x WOF strips. Subcut into:
 - ⊙ One (1) 5" x 23" strip
 - ⊙ One (1) 5" x 14" strip
 - ⊙ Two (2) 5" x 9 1/2" strips
 - ⊙ Three (3) 5" x 5" squares

Fabric G

- ⊙ Cut one (1) 5" x WOF strip. Subcut into:
 - ⊙ One (1) 5" x 9 1/2" strip
 - ⊙ Three (3) 5" x 5" squares

Fabric H

- ⊙ Cut two (2) 5" x WOF strips. Subcut into:
 - ⊙ Sixteen (16) 5" x 5" squares

Fabric I

- ⊙ Cut one (1) 5" x WOF strips. Subcut into:
 - ⊙ One (1) 5" x 14" strip
 - ⊙ One (1) 5" x 9 1/2" strip
 - ⊙ Two (2) 5" x 5" squares

Fabric J

- ⊙ Cut two (2) 5" x WOF strips. Subcut into:
 - ⊙ Fourteen (14) 5" x 5" squares

CONSTRUCTION

Sew all rights sides together with 1/4" seam allowance.

- ⊙ Sew blocks into rows according to the following instructions. Since all pieces are 5" tall to simplify the directions we will refer to the pieces by their width only, instead of writing the full dimensions. Fabric is indicated by bold letter.

⊙ Ex. "5" x 14" strip from Fabric A" will be written: **A. 14"**

⊙ Row 1

⊙ **A. 5"** > **D. 5"** > **A. 27 1/2"** > **J. 5"** > **A. 14"** > **H. 5"** > **A. 9 1/2"**



⊙ Row 2

⊙ **B. 5"** > **C. 5"** > **B. 5"** > **C. 5"** > **B. 5"** > **A. 5"** > **C. 5"** > **D. 5"** > **C.**



© Row 3

© A.5' > D.5' > A.5' > E.5' > A.9 1/2' > H.5' > A.5' > J.5' > A.14' > H.5' > A.9 1/2'



© Row 4

© A.5' > D.5' > A.5' > E.5' > A.9 1/2' > H.5' > A.5' > J.5' > A.14' > H.5' > A.5' > J.5'



© Row 5

© A.5' > D.5' > A.5' > C.5' > F.9 1/2' > C.5' > F.5' > C.5' > F.14' > C.5' > F.5' > C.5'



© Row 6

© A.5' > D.5' > A.5' > E.5' > A.9 1/2' > H.5' > A.5' > J.5' > A.14' > H.5' > A.5' > J.5'



© Row 7

© A.5' > C.5' > I.5' > C.5' > I.9 1/2' > C.5' > I.5' > C.5' > I.14' > C.5' > A.5' > J.5'



© Row 8

© A.5' > D.5' > A.5' > E.5' > A.9 1/2' > H.5' > A.5' > J.5' > A.14' > H.5' > A.5' > J.5'



© Row 9

© A.5' > D.5' > A.5' > E.5' > A.9 1/2' > H.5' > A.5' > J.5' > A.5' > D.5' > A.5' > H.5' > A.9 1/2'



© Row 10

© A.5' > D.5' > A.5' > E.5' > A.9 1/2' > C.5' > G.5' > C.5' > G.5' > C.5' > G.5' > C.5' > G.9 1/2'



© Row 11

© J.5' > C.5' > J.5' > C.5' > J.5' > A.5' > H.5' > A.5' > J.5' > A.5' > D.5' > A.5' > H.5' > A.9 1/2'



© Row 12

© A.5' > D.5' > A.5' > E.5' > A.9 1/2' > H.5' > A.14' > D.5' > A.5' > H.5' > A.9 1/2'



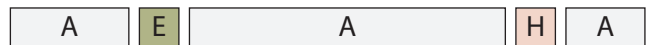
© Row 13

© A.5' > C.5' > F.5' > C.5' > F.9 1/2' > C.5' > F.23' > C.5' > A.9 1/2'



© Row 14

© A.14' > E.5' > A.36 1/2' > H.5' > A.9 1/2'



© Row 15

© A.14' > E.5' > A.14' > B.23' > C.5' > B.9 1/2'



© Now, pin your rows right sides together and sew them. Alternate sewing start points from row to row to prevent skewing of the quilt top. (I.e. Sew from the right side of the quilt, then sew from the left side of the quilt.)

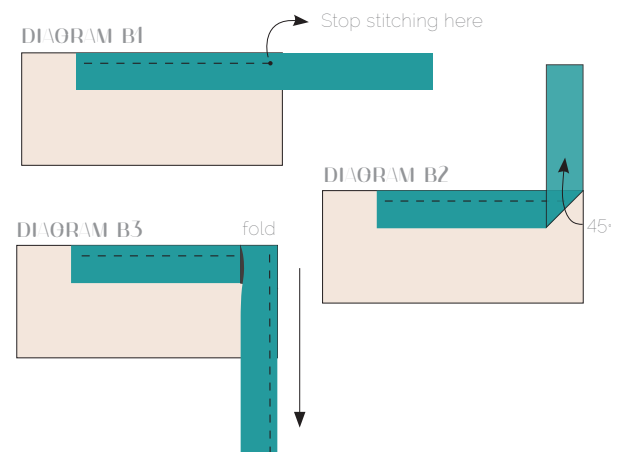
© Press.

QUILT ASSEMBLY

Sew rights sides together

- © Place BACKING FABRIC on a large surface wrong side up. Stretch it with masking tape against that surface.
- © Place BATTING on top of backing fabric.
- © Place TOP on top of the batting with right side facing up. Smooth away wrinkles using your hands.
- © Pin all layers together and baste with basting thread, using long stitches. You can also use safety pins to join the layers.
- © Machine or hand quilt starting at the center and working towards the corners. Remember that quilting motifs are a matter of personal preference. Have fun choosing yours!
- © After you finish, trim excess of any fabric or batting, squaring the quilt to proceed to bind it.

- © Stop stitching before you reach the last 5 or 6 inches. Cut the threads and remove the quilt from under the machine presser foot. Lay the loose ends of the binding flat along the quilt edge, folding the ends back on themselves where they meet. Press them together to form a crease. Using this crease as the stitching line, sew the two open ends of the binding with right sides together (you can help yourself marking with a pencil if the crease is difficult to see).
- © Trim seam to $\frac{1}{4}$ " and press open. Complete the sewing. Turn binding to back of the quilt, turn raw edge inside and stitch by hand using blind stitch.



BINDING

Sew rights sides together.

- © Cut enough strips $1\frac{1}{2}$ " wide by the width of the fabric **B** to make a final strip 282" long. Start sewing the binding strip in the middle of one of the sides of the quilt, placing the strip right side down and leaving an approximated 5" tail. Sew with $\frac{1}{4}$ " seam allowance (using straight stitch), aligning the strip's raw edge with the quilt top's raw edge.
- © Stop stitching $\frac{1}{4}$ " before the edge of the quilt (**DIAGRAM B 1**). Clip the threads. Remove the quilt from under the machine presser foot. Fold the strip in a motion of 45° and upward, pressing with your fingers (**DIAGRAM B 2**). Hold this fold with your finger, bring the strip down in line with the next edge, making a horizontal fold that aligns with the top edge of the quilt (**DIAGRAM B 3**). Start sewing at $\frac{1}{4}$ " of the border, stitching all the layers. Do the same in the four corners of the quilt.



artgalleryfabrics.com

NOTE: While all possible care has been taken to ensure the accuracy of this pattern, we are not responsible for printing errors or the way in which individual work varies. Please read instructions carefully before starting the construction of this quilt. If desired, wash and iron your fabrics before starting to cut.